



SEMIRARA MINING & POWER CORPORATION

Annual Stockholders' Meeting
Manila Golf Club, 2 May 2016, 10 AM



COAL MINING SAFETY EFFORTS



- Revision of mining and operating protocols
- Improve and strengthen organizational structure
 - Additional Safety Equipment
 - Safety trainings



SLOPE STABILITY RADAR



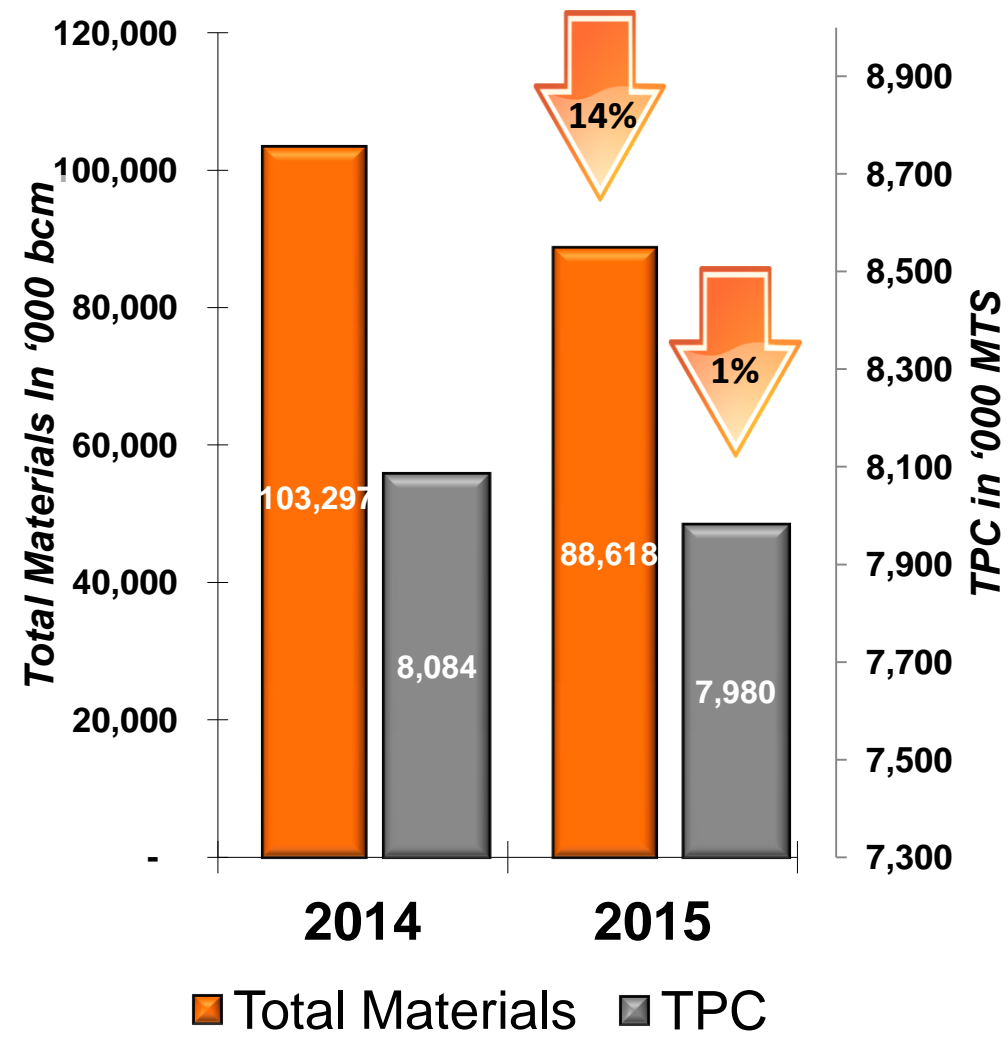
Safety is our number one priority. The Company acquired two units of Slope Stability Radar (SSR) to complement our existing Total Robotic Station for real time, 24-hour slope movement monitoring. The SSR is a state-of-the-art technology for monitoring mine walls and general slopes and is now a generally-accepted tool for high-risk slope management.

2015 MINING WORKFORCE TRAINING HOURS

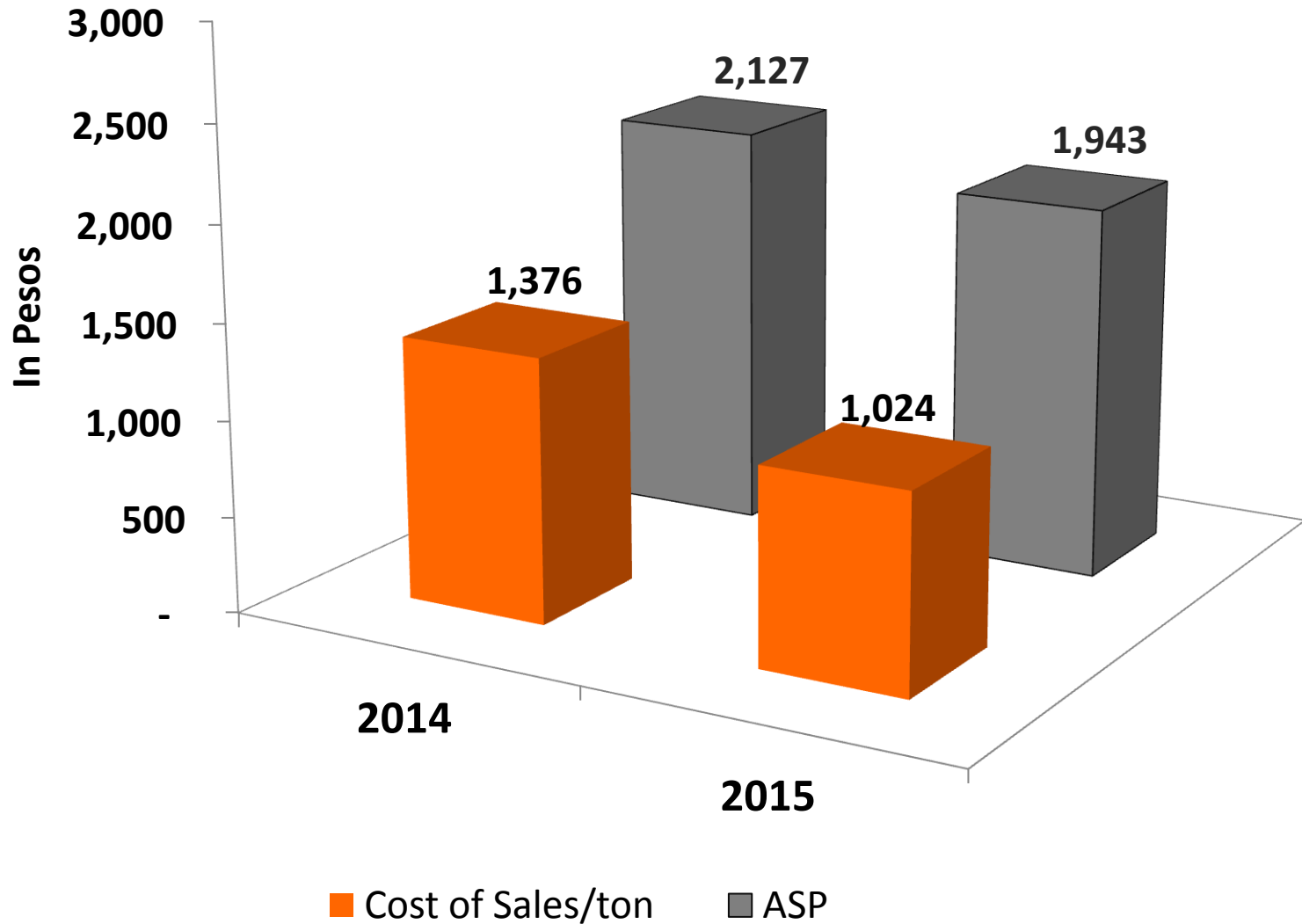
Training Category	Executives	Managers	Supervisors	Staff	Total
Environment, Safety & Health	40	1,133	3,462	22,263	26,898
Leadership	120	188	1,237	-	1,545
Quality Management System	48	672	1,196	4,087	6,003
Professional & Technical Development	170	279	184	2,342	2,975
Behavioral	-	-	24	1,131	1,155
No. of Training Hours	378	2,272	6,103	29,823	38,576
Training Hours per Category %	1%	6%	16%	77%	100%

Safety training constituted 70% or 26,898 hours out of the 38,576 total training hours in 2015.

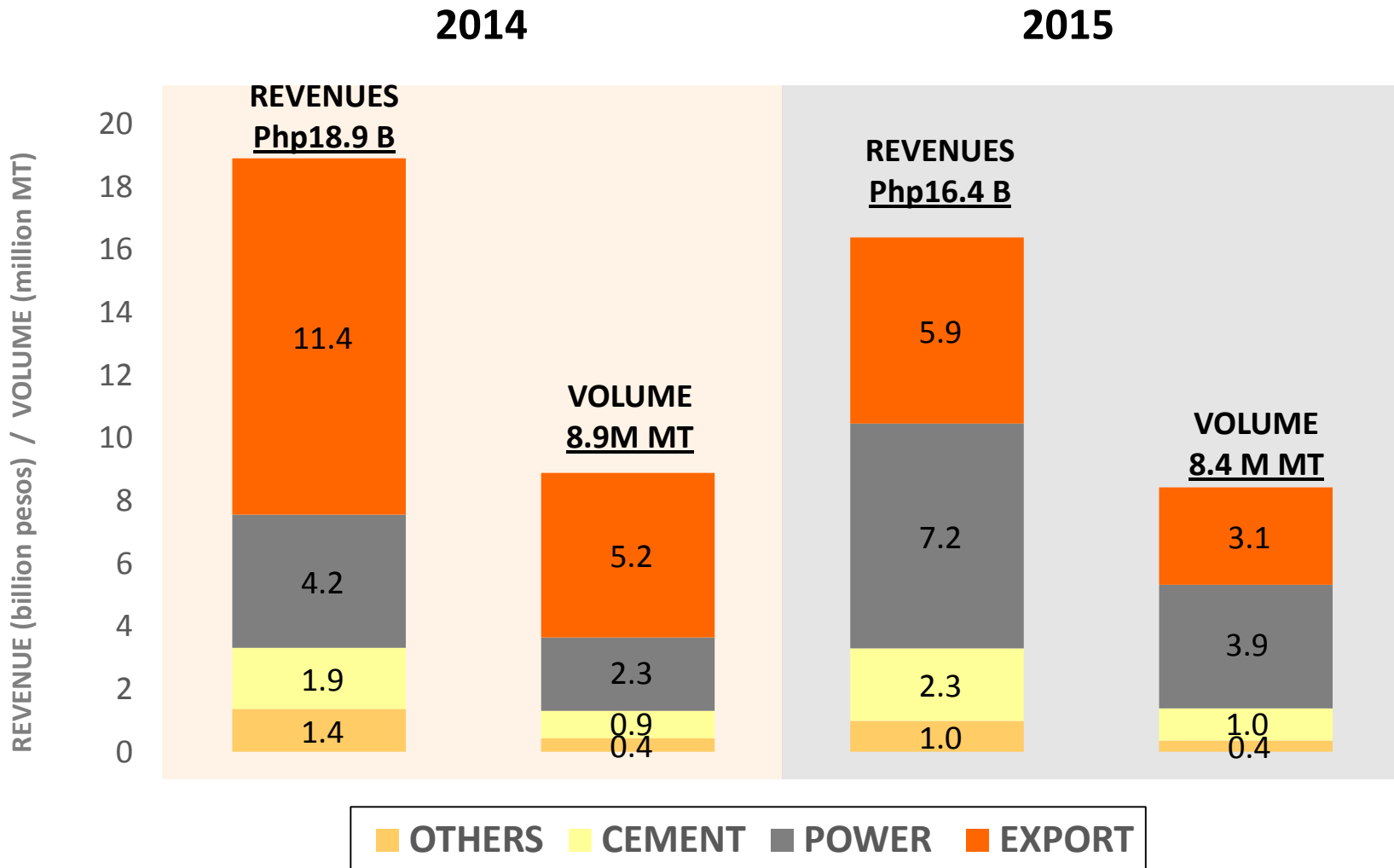
TOTAL MATERIALS MOVED / TOTAL PRODUCT COAL



AVERAGE SELLING PRICE/ COST OF SALES PER TON

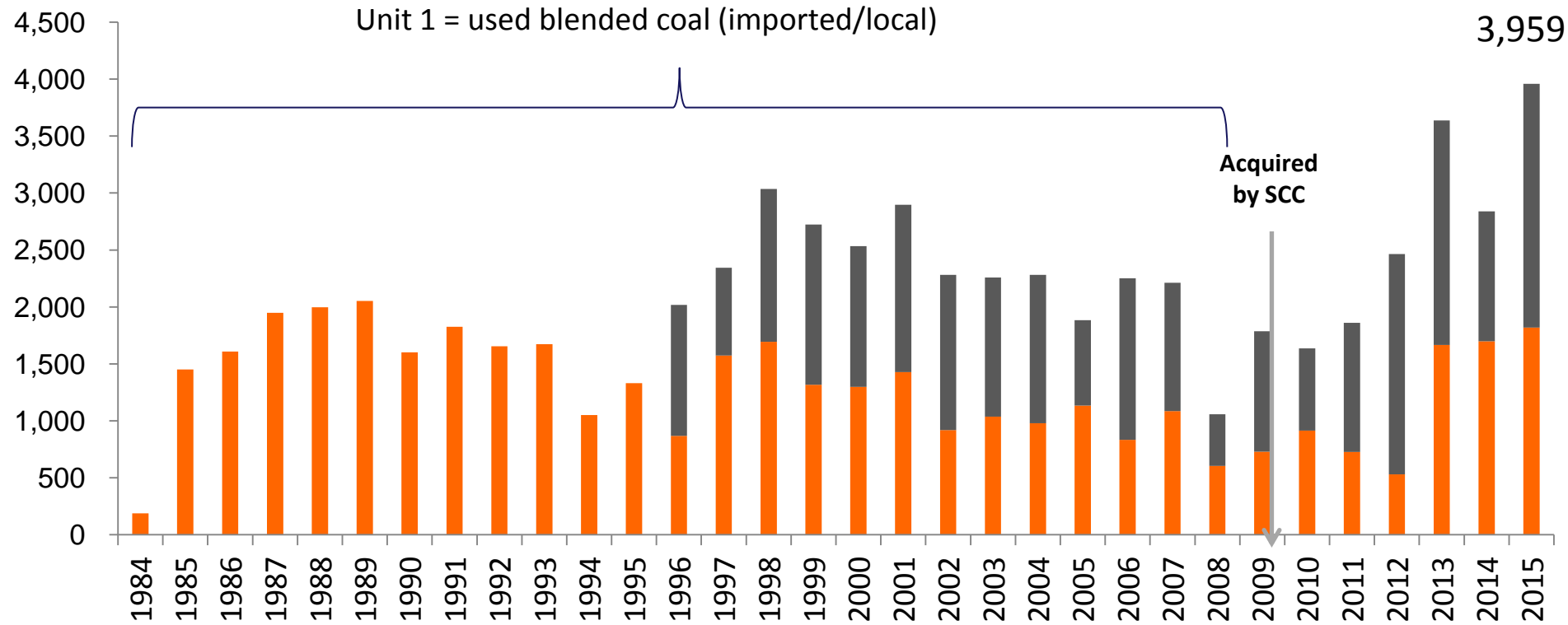


COAL SALES

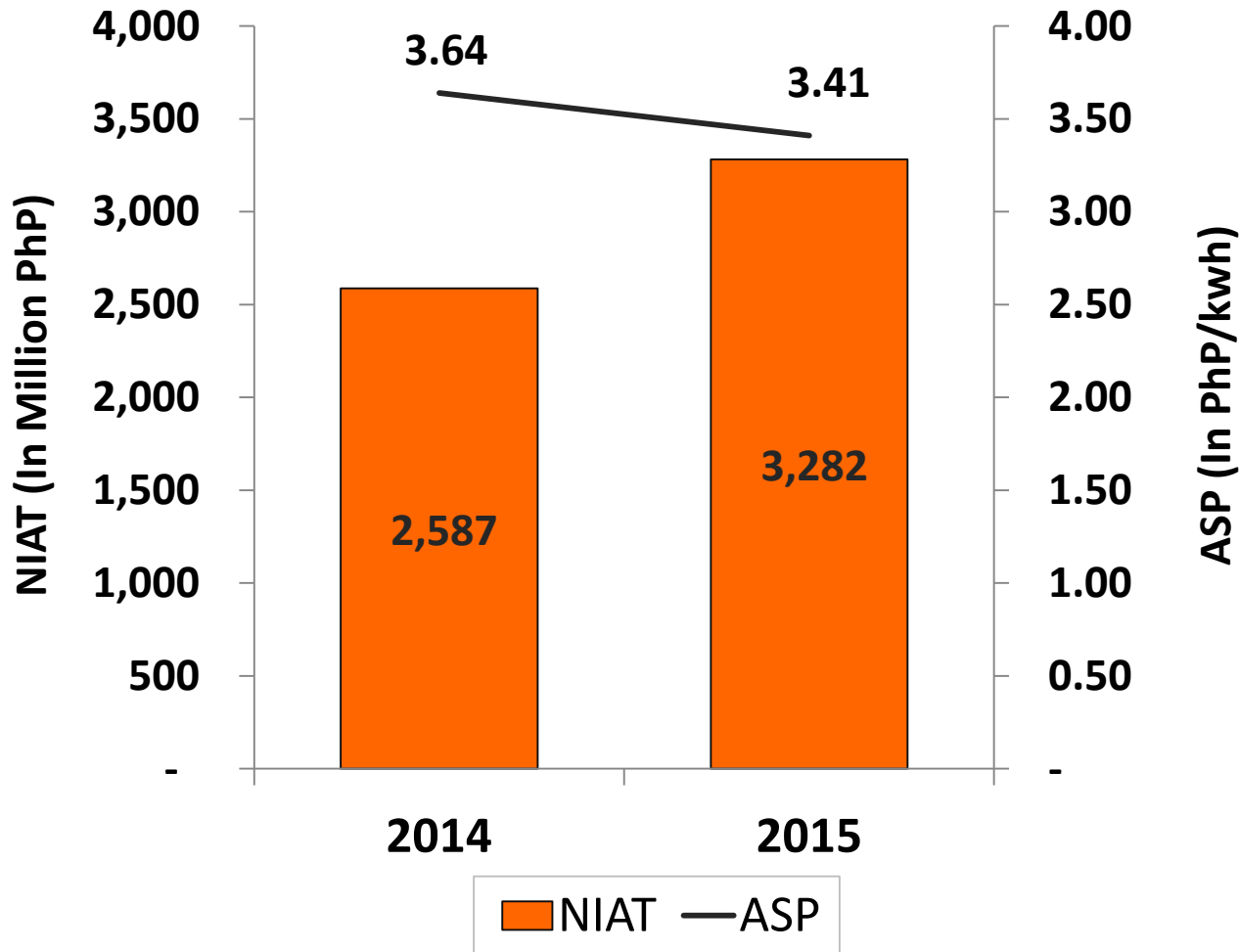


SCPC ENERGY GENERATION

In GWH



POWER AVERAGE SELLING PRICE (ASP) & NET INCOME AFTER TAX (NIAT)



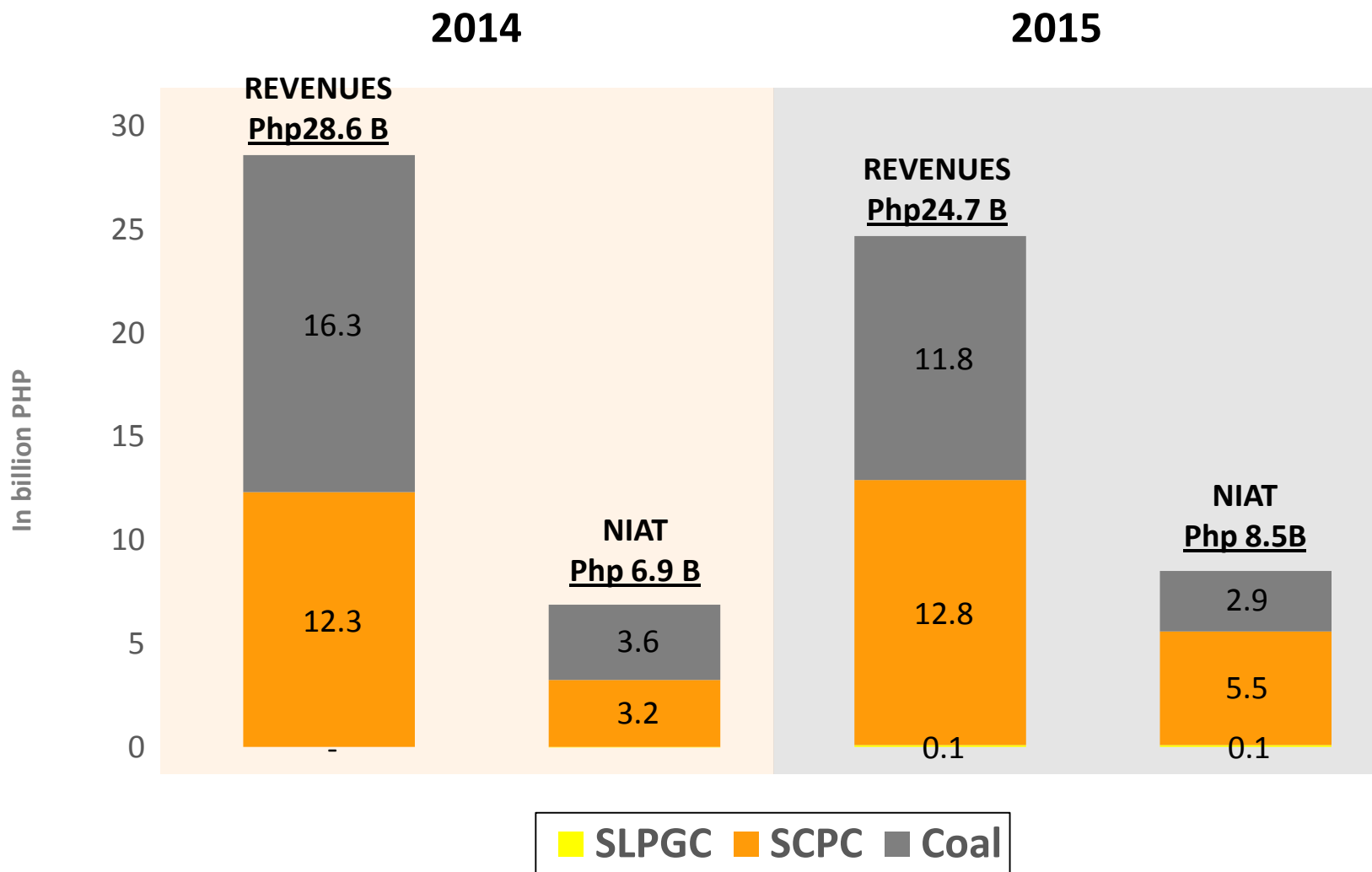


SLPGC 2 X 150 MW PHASE 1 EXPANSION

Milestones	Unit 1	Unit 2
Backfeed Power	14 Feb 15	14 Feb 15
Boiler 1 st Firing	19 Mar 2015	3 Jun 2015
Steam Blowing	7-13 Apr 2015	5-10 Jun 2015
Steam Admission	5 May 2015	7 Aug 2015
1 st Synchronization	7 Jul 2015	16 Aug 2015
Target Restart	7 Dec 2015	20 Nov 2015
NGCP Grid Compliance Test	8-10 March 2016	4-7 Dec 2015
2015 Production Performance	Unit 1	Unit 2
Total Gross Generation	159.8 GWh	51.4 GWh
Running Hours	1,469	555
Maximum Capacity Achieved	150 MW	150 MW
Bilateral Contracts Signed	Term (Years)	MW
Meralco	5	120
VECO	3	50
GN Power	2	52

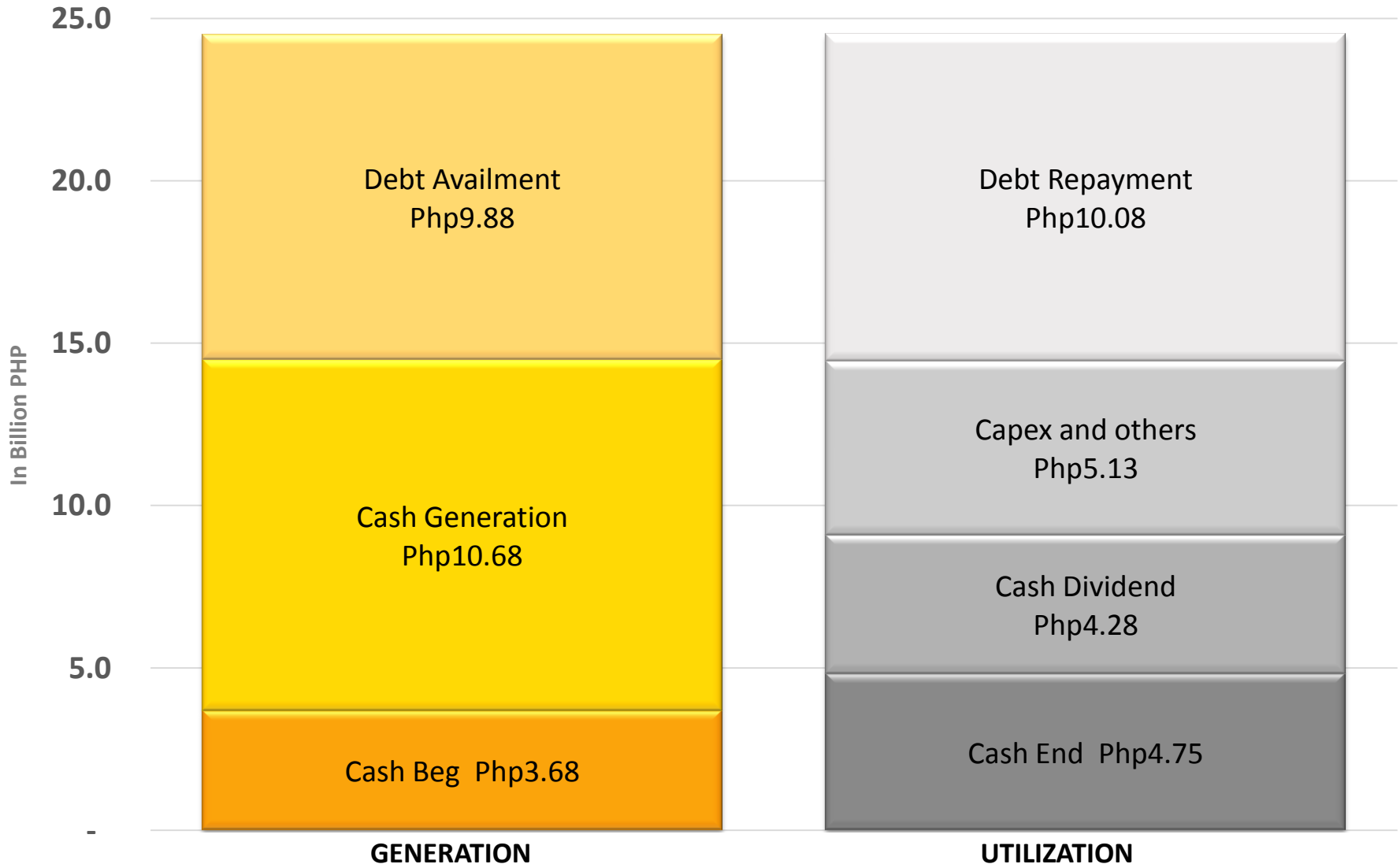
CONSOLIDATED REVENUES & NIAT

2014 VS 2015



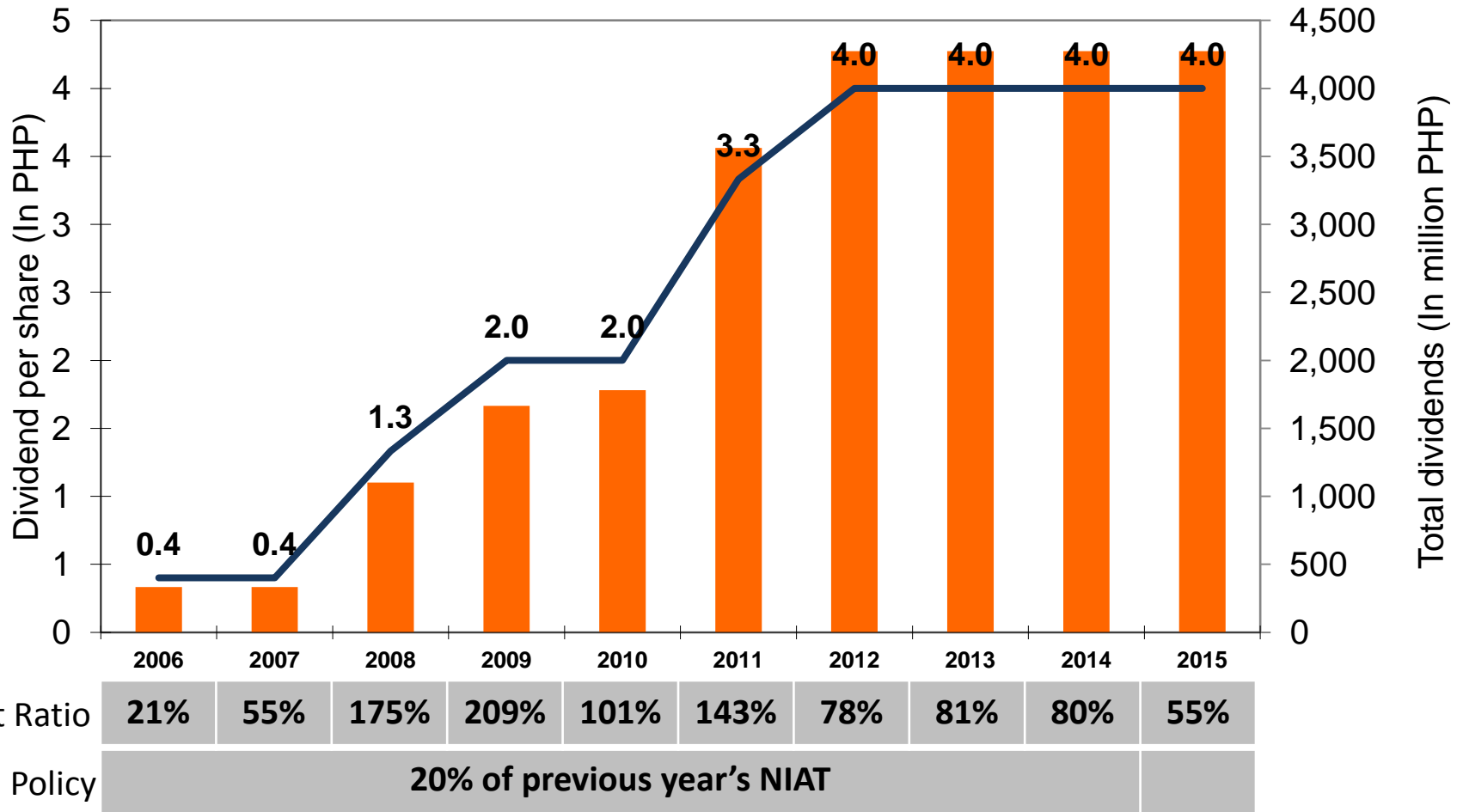
CASH GENERATION & UTILIZATION

Consolidated (2014 VS 2015)



HISTORICAL DIVIDENDS

2014 VS 2015



**Restated to 2014 post-stock dividend outstanding shares*



EMERGENCY PREPAREDNESS 2015 TRAINING & DRILL ACTIVITIES



- General Safety Orientation
- Safety Orientation
- Fire Drill, Earthquake Drill, First Aid
- Loss Control Management
- Landslide Drill
- Emergency Preparedness and Firefighting
- Fire Evacuation, Firefighting
- Bandaging and Splinting, Personnel Injury
- Building Evacuation, Fire Drill
- Basic Electrical Safety Training
- Fire Drill, Earthquake Drill, First Aid
- Fire Safety
- Fire Drill on Equipment Vehicle
- General Safety and Hazard Assessment

EMERGENCY PREPAREDNESS



The Company undertakes to help strengthen emergency preparedness and response in the Caluya group of islands.

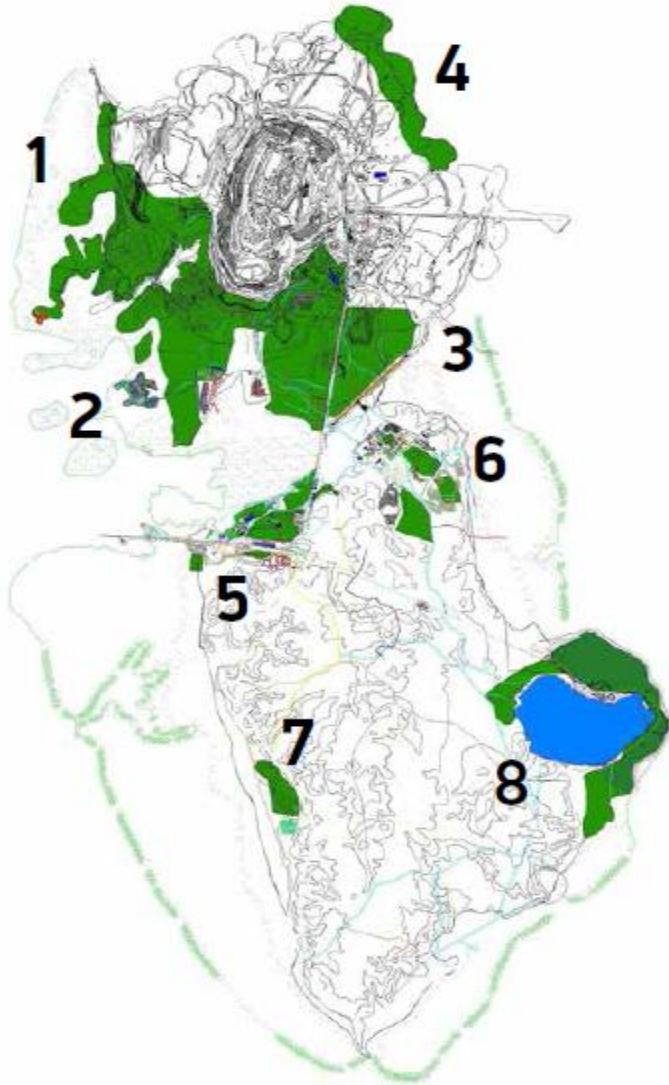
EVACUATION CENTERS PER BARANGAY



The Company commits to provide a 720-square meter shelter for each of the 17 barangays that will be used for evacuation centers in times of calamities.

SEMIRARA ISLAND REFORESTATION

As of 2015



SITE	# OF HECTARES
1	79.45
2	170.06
3	102.44
4	137.82
5	19.20
6	8.25
7	22.55
8	84.91
TOTAL	624.68



SEMIRARA ISLAND: K-12 READY



The Company is building additional 12 classrooms to be K-12 ready by the start of the school year in June.

AWARDS AND RECOGNITION



Mining & Power

Power



Excellence in Corporate Governance and Investor Relations, Titanium The Asset Corporate Awards 2015

DECEMBER 2015
HONG KONG



Corporate Social Responsibility, Finalist Platts Global Energy Awards 2015

DECEMBER 2015
NEW YORK CITY
U.S.A



Integrated Management System Continued Certification

ISO 9001:2008 Quality Management System
ISO 14001:2004 Environmental Management System
OHSAS 18001:2007 Occupational Health and Safety Management Systems

DECEMBER 2015
UNITED KINGDOM



Best Corporate Governance 10+ FinanceAsia's Best Philippine Companies 2015

JUNE 2015
MAKATI CITY
PHILIPPINES



Top One Corporate Taxpayer 2015 Province of Batangas

DECEMBER 2015
BATANGAS CITY
PHILIPPINES



Quality Management System Continued Certification

ISO 9001:2008 Quality Management System

DECEMBER 2015
UNITED KINGDOM



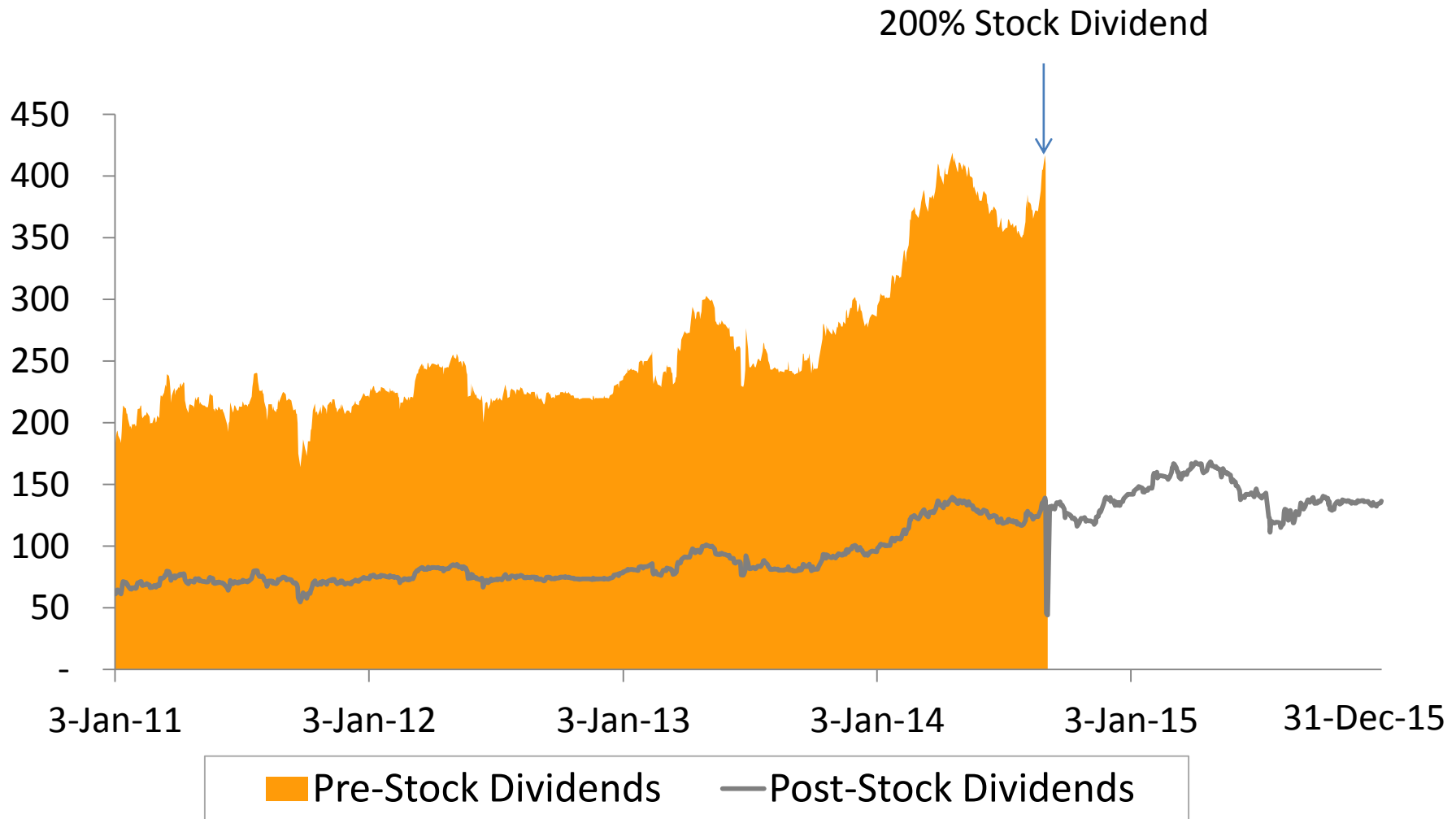
Corporate Social Responsibility 1st Runner Up ASEAN Energy Awards 2015

OCTOBER 2015
KUALA LUMPUR
MALAYSIA



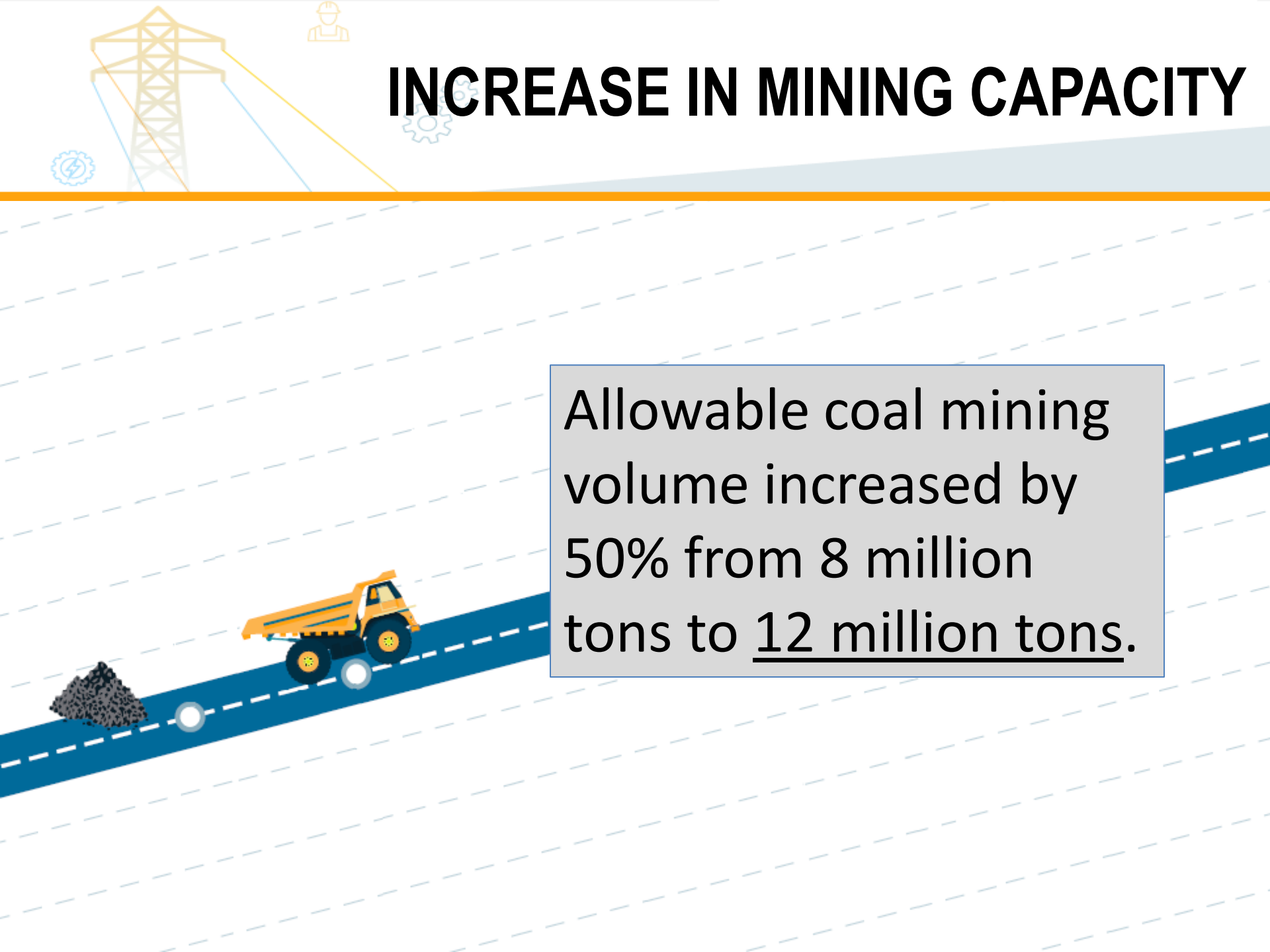
SCC SHARE PRICE MOVEMENT

2011 - 2015





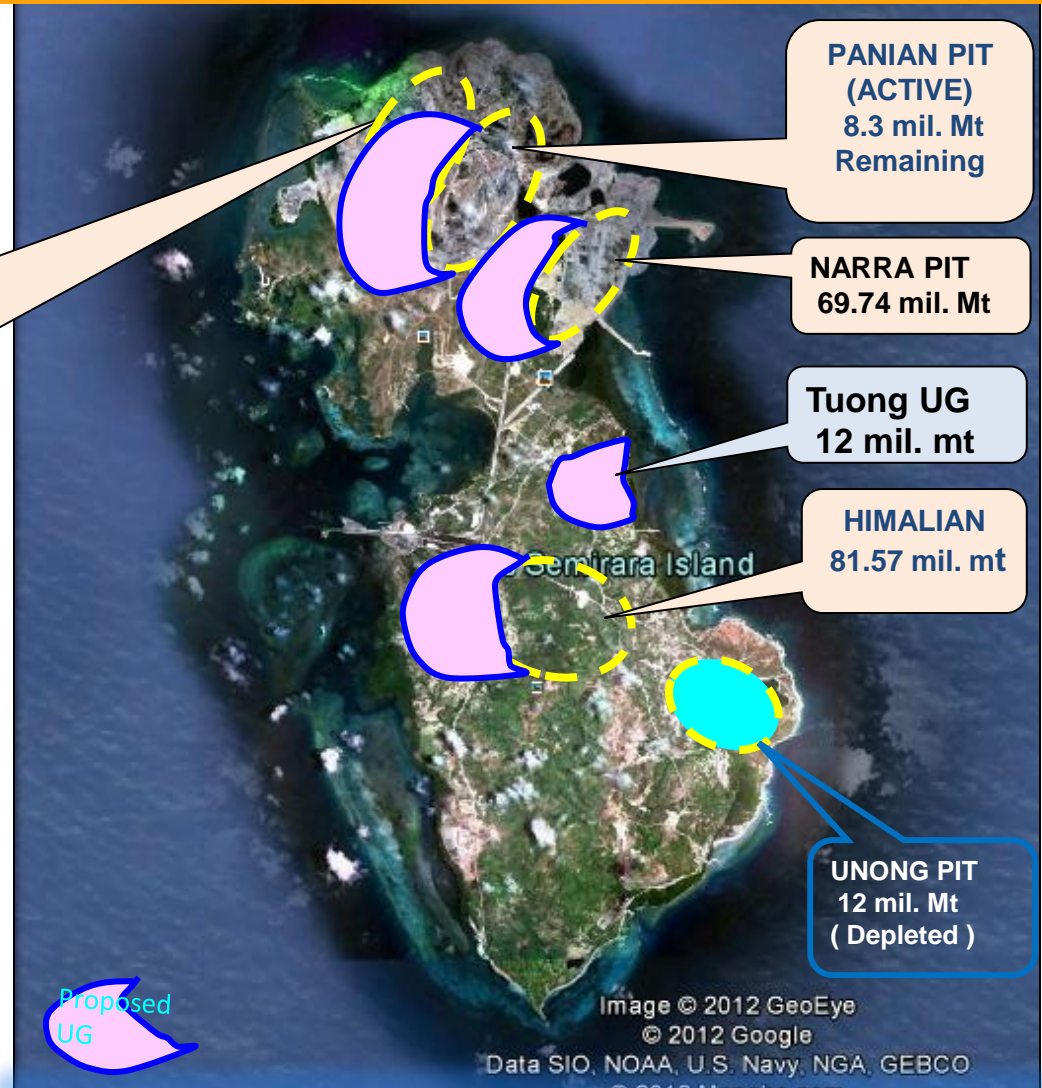
INCREASE IN MINING CAPACITY



Allowable coal mining volume increased by 50% from 8 million tons to 12 million tons.

MOLAVE MINE

MOLAVE MINE
(mineable reserves pending certification by local competent person)



Total Land Area = 55 sq.km (5,500 hectares)



END OF PRESENTATION

Thank You